



UHI | SHETLAND



© Rachel Shucksmith

**SHETLAND ROCKY SHORE
PHOTOGRAPHIC
SPECIES GUIDE**

Safety First

When heading to the sea shore always plan ahead!

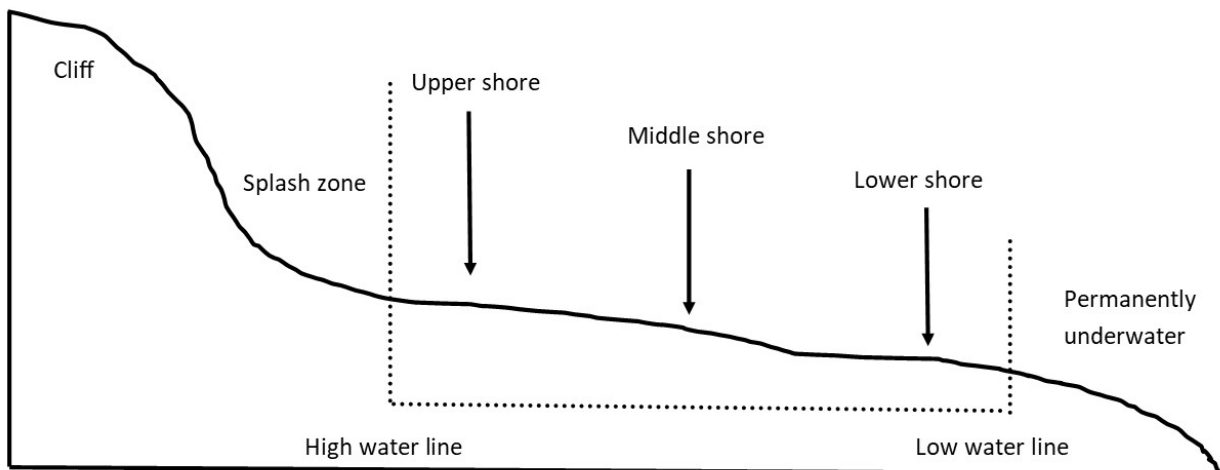
- Check the weather forecast and wear appropriate clothing and wellie boots.
- Check the tide times and aim to be on the shore 2 hours before high tide and work your way down the shore with the lowering tide.
- Always keep a close eye on a rising tide.
- Do not go alone.
- Always carry a mobile phone and first aid kit with you.
- Always wash your hands after touching marine life and especially before eating.
- Take plenty of food and water

If you get into difficulty on the shore call **999** and ask for the **Coastguard**

Rocky Shores

Rocky shores are very biologically diverse with species from most major species groups represented. Environmental conditions are extreme and quickly change from fully terrestrial to fully marine with a band in between that is flooded twice a day by the tide. Many species have evolved special adaptations to help them cope with these environmental stresses. Because of this, species are often found in particular zones within the rocky shore where they are able to survive.

Rocky Shore Zones



Upper shore- only submerged with water at extreme high tides. Black band of lichens, some seaweeds such as spiral wrack and channelled wrack. Rough periwinkles, barnacles and limpets.

Middle Shore- larger quantity and diversity of seaweed species such as bladder wrack and egg wrack. More animals such as dog whelk, common periwinkle, top shells, limpets, barnacles and mussels.

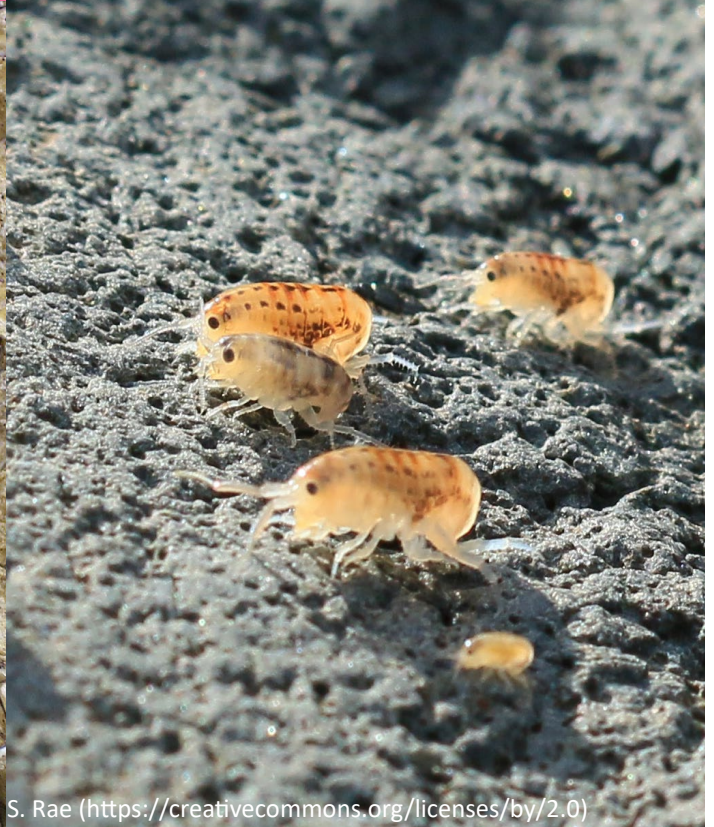
Lower Shore- only exposed at extreme low tides. More red seaweeds and saw wrack is common. Highest number of animals found in this zone.

All Shores



© Richard Shelmerdine

Barnacles- various species



S. Rae (<https://creativecommons.org/licenses/by/2.0>)

Amphipods (Sandhopper)- various species

Upper Shore



Kate Allan© Shetland UHI



Kate Allan© Shetland UHI

Black Tar Lichen (*Verrucaria* sp.)



Bildoj, CC BY-SA 3.0

Black Lichen (*Lichina pygmaea*)

Upper Shore

Kate Allan © Shetland UHI



James St. John, CC BY 2.0

Channelled wrack (*Pelvetia canaliculata*)

Spiral wrack (*Fucus spiralis*)

H. Zell, CC BY-SA 3.0



H. Zell, CC BY-SA 3.0



Small Periwinkle (*Melarhaphe neritoides*)- H9mm



me'nthedogs, CC BY 2.0



Emöke Deryas, CC BY-SA 4.0

Common Sea Slater (*Ligia oceanica*)-H18mm W14mm

Rough Periwinkle (*Littorina saxatilis*)-H18mm W14mm

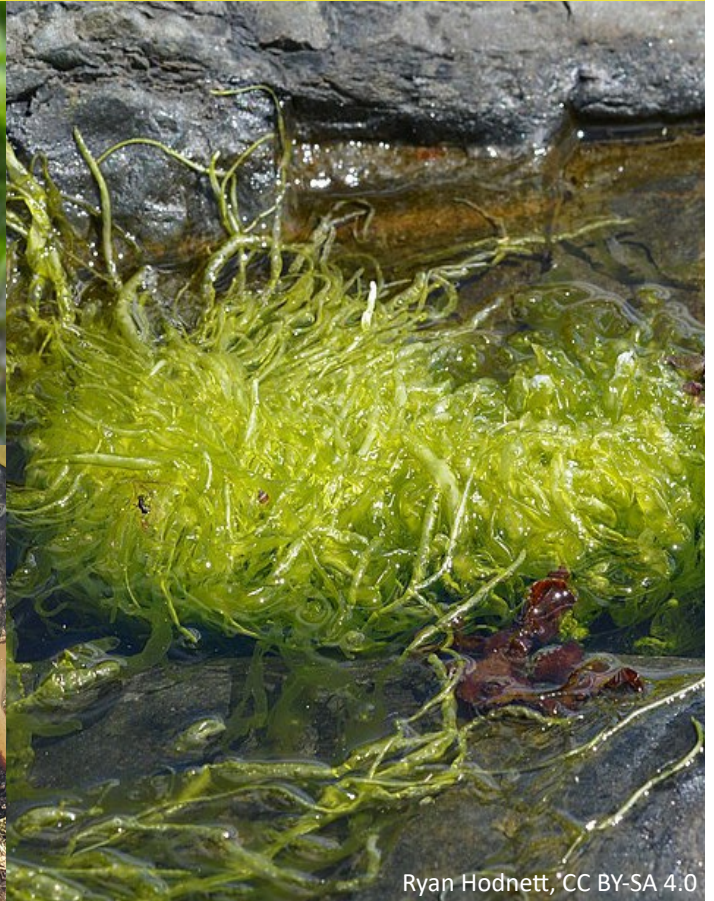
Middle Shore & Lower Shore



Kristian Peters, CC BY-SA 3.0



Kate Allan © Shetland UHI



Ryan Hodnett, CC BY-SA 4.0

Broad leaf sea lettuce (*Ulva lactuca*)

Gutweed (*Ulva intestinalis*)



Kate Allan © Shetland UHI



Wrack Siphon Weed

Rachel Shucksmith © Shetland UHI



Kate Allan © Shetland UHI

Knotted (Egg) wrack (*Ascophyllum nodosum*)

Saw wrack (*Fucus serratus*)

Middle Shore & Lower Shore



Kate Allan © Shetland UHI

Bladder wrack (*Fucus vesiculosus*)



Rachel Shucksmith © Shetland UHI

Thongweed (*Himanthalia elongata*)



Rosser1954, CC BY-SA 4.0

Oarweed (*Laminaria digitata*)



Paul Brazier (CCW) © Crown Copyright 2009



GBNNS © Crown Copyright 2009

Japanese wireweed (*Sargassum muticum*)

Middle Shore & Lower Shore

Ansgar Gruber, CC BY-SA 4.0



Irish Moss (*Chondrus crispus*)



© Keith Hiscock

False Irish Moss (*Mastocarpus stellatus*)



Luis Fernández García, CC BY-SA 4.0

Pepper Dulse (*Osmundea pinnatifida*)



Rosser1954, CC BY-SA 4.0

Purple Laver (*Porphyra umbilicalis*)

Middle Shore & Lower Shore



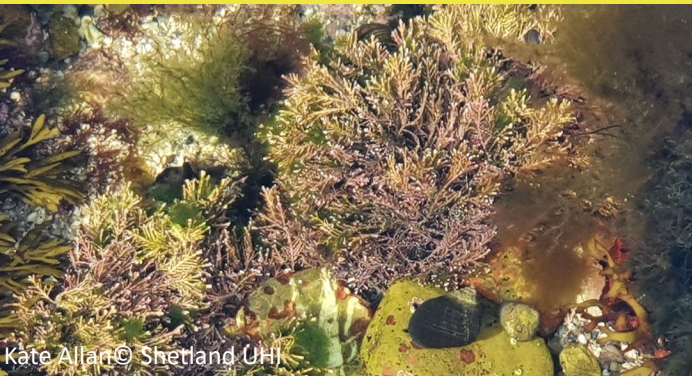
Kate Allan © Shetland UHI

Encrusting Coralline Algae (*Lithothamnion* sp.)



Rachel Shucksmith © Shetland UHI

Punctured Ball Weed (*Leathesia marina*)



Kate Allan © Shetland UHI

Common Coralline Algae (*Corallina officinalis*)



Kate Allan © Shetland UHI

Green Sea Fingers (*Codium* sp.)



Arrouz, CC BY-SA 4.0 Nilfanion, CC BY-SA 3.0

Bread-crumb Sponge (*Halichondria panicea*)



© Shetland UHI

Green (shore) Crab (*Carcinus maenas*)



Beadlet Anemone (*Actinia equina*)

Middle Shore & Lower Shore



Ansgar Gruber, CC BY-SA 4.0



Jan Delsing, Public domain

Common Periwinkle (*Littorina littorea*)- H5cm

Dog Whelk (*Nucella lupilus*)- H3cm



beatroot_fsu, Public domain



Kate Allan © Shetland UHI

Blue Mussel (*Mytilus edulis*)

Limpets (*Patella* sp.)



H. Zell, CC BY-SA 3.0 H. Zell, CC BY-SA 3.0

Flat Periwinkle (*Littorina obtusata*)- H1.5cm

Painted Top shell (*Calliostoma zizyphinum*)- H3xW3cm

Indicator Species

© J.Tweddle



Flat top shell (*Steromphala umbilicalis*)- H1.6cm



Llez, CC BY-SA 3.0

Grey Top shell (*Calliostoma zizyphinum*)-H1.5xW1.7cm

Lower Shore



Cwmhiraeth, CC BY-SA 3.0

Dulse (*Palmaria palmata*)



Rachel Shucksmith © Shetland UHI

Sugar Kelp (*Saccharina latissima*)



S. Rae, CC BY 2.0

Chiton (*Tonicella marmorea*)



Aldaron, CC BY-SA 2.5

Common Starfish (*Asterias rubens*)



Fernando Herranz Martin, GPL

Rosy Feather Star (*Antedon bifida*)- juveniles



Bengt Littorin, CC BY 2.0

Common Sun Star (*Crossaster papposus*)

Lower Shore



© Shetland UHI

Edible Sea Urchin (*Echinus esculentus*)



© Shetland UHI

Butterfish (*Pholis gunnellus*)



anasacuta, CC BY 4.0

Green Sea Urchin (*Psammechinus miliaris*)



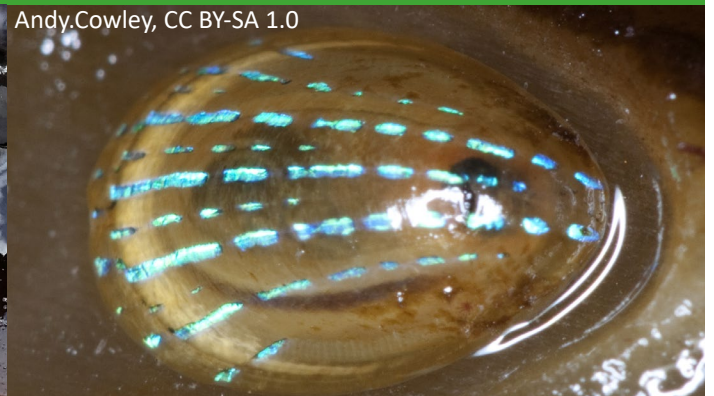
© Rachel Shucksmith

Long-spined Scorpion fish (*Taurulus bubalis*)



Rachel Shucksmith © Shetland UHI

Sea Mat (*Membranipora membranacea*)



Andy.Cowley, CC BY-SA 1.0

Blue-rayed Limpet (*Patella pellucidum*)



© Shetland UHI

Great Spider Crab (*Hyas araneus*)



Pline, CC-BY-SA-3.0

Snakelocks Anemone (*Anemonia viridis*)

THIS PUBLICATION WAS PRODUCED BY-



Shetland Community Wildlife Group

c/o Marine Spatial Planning Team
UHI Shetland, Scalloway Campus
Port Arthur
Scalloway
Shetland
ZE1 0UN

01595 772000

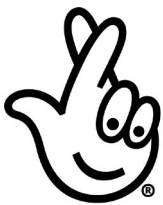
marineplanning.shetland@uhi.ac.uk

UHI | SHETLAND

www.shetlandcommunitywildlife.org

shetlandcommunitywildlife@outlook.com

THIS PUBLICATION WAS SUPPORTED BY-



Made possible with

**Heritage
Fund**



NatureScot

Scotland's Nature Agency
Buidheann Nàdair na h-Alba